

[Select a Product](#)[Answer Navigator](#)[Find an Answer](#)[Ask a Question](#)

How to check or change the IP address of your device

Published 05/20/2008 06:41 AM | Updated 12/22/2017 04:43 PM | Answer ID 85023

[QR Code](#)

Other users found this answer helpful

Yes 7

[Rate this answer](#)

Share Print Email this page

How do I check or specify the IP address of my device?

Follow these steps to check or change the IP address of your device.

Note

- If you are not sure which IP address to change the device to, or if you want to change the IP address that has been assigned to it on your network, please contact your network administrator.
- If you are using a DHCP server, then an IP address will automatically be assigned to your device.
- When **[User Authentication Management]** is set, a valid user name and password must be entered to perform the operation. For details about user authentication, consult your machine administrator.
- Screenshots are provided for reference purposes only. Your display may vary depending on your operating system and device.

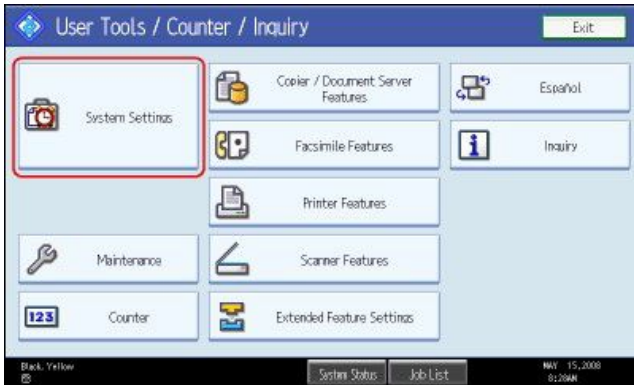
Checking or changing the IP address of your device

To change the IP address of your device, follow these steps:

1. On the operation panel of your device, press the **[User Tools/Counter]** key.



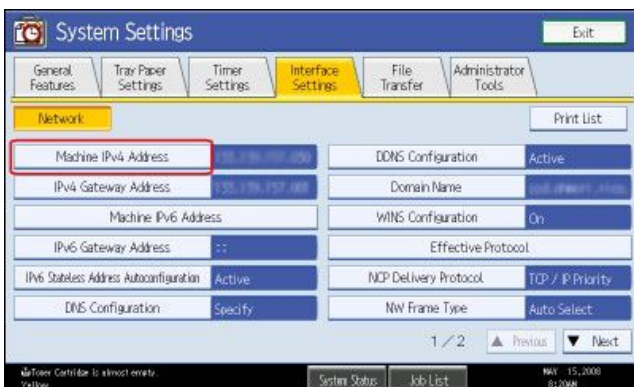
2. Press **[System Settings]**.



3. Press **[Interface Settings]**.



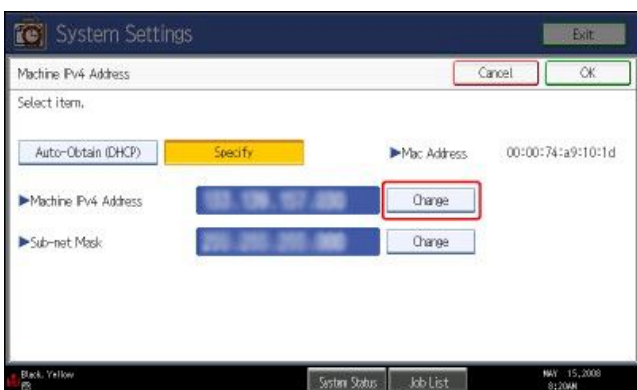
4. Press **[Machine IPv4 Address]**.



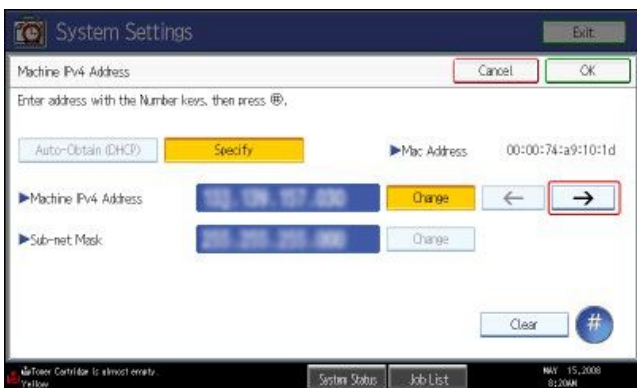
5. Machine IPv4 address is displayed. If you wish to change the IP address, select

[Specify] and press [Change] .

- **[Auto Obtain (DHCP)]** - The DHCP server automatically assigns an IP address to the device
- **[Specify]** - The user must specify the IP address the device uses



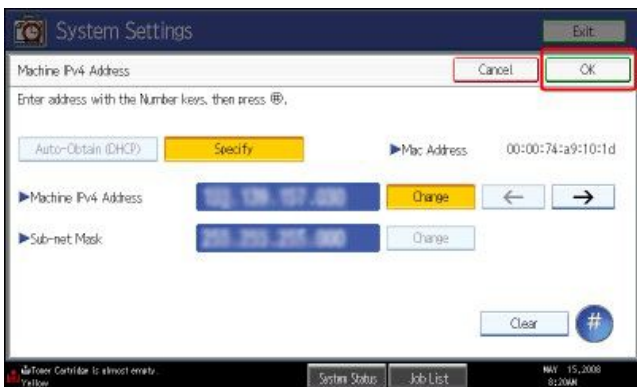
6. Press [->] to move the cursor to the place you want to change.



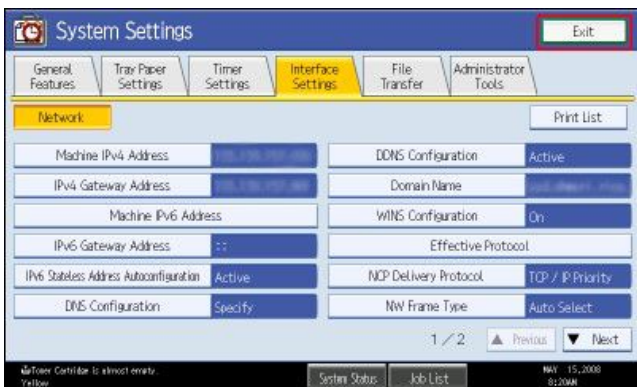
7. Use the numeric keypad on your device to enter the desired IP address.

8. Once all fields have been set, press [OK].

Note: If your network environment requires it, set the subnet mask using steps 5-8, and the IPv4 gateway address using steps 4-8.



9. Press [Exit].



10. Press **[Exit]**.



[Page Top](#)

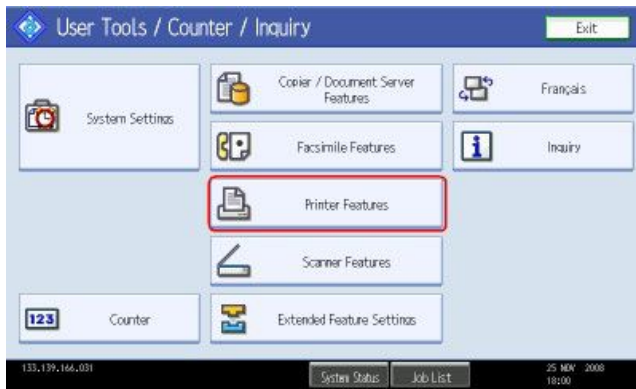
Printing the IP address of your device

To check the IP address of your device, follow these steps:

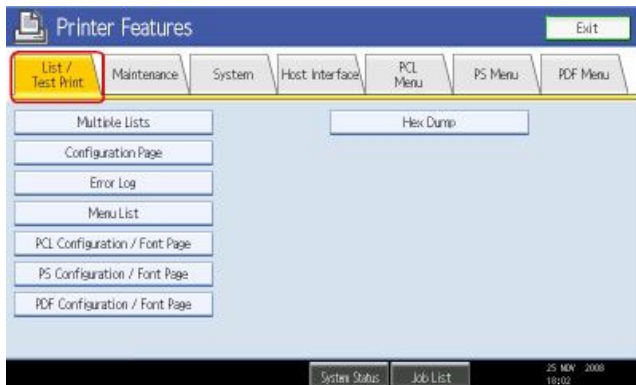
1. On the operation panel of your device, press the **[User Tools/Counter]** key.



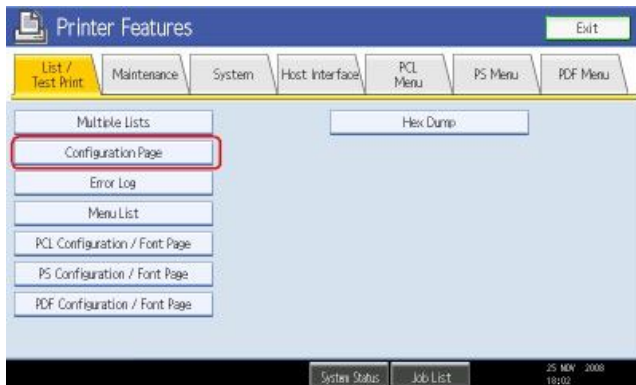
2. Press **[Printer Features]**.



3. Press [List/Test Print].



4. Press [Configuration Page].



5. On the device's operation panel, press [User Tools/Counter].

You can find your IP address listed towards the bottom of the sheet, under the heading Host Interface:

Host Interface			
I/O Buffer	128 KB	I/O Timeout	15 seconds
DHCP	On	IP Address	000.000.000.000 (011.022.033.044)
Subnet Mask	255.255.255.000 (000.000.000.000)	Gateway Address	000.000.000.000 (000.000.000.000)
Frame Type (NW)	Auto Select	TCP/IP	Active
NetWare	Active	SMB	Active
AppleTalk	Active	Ethernet Speed	Auto Select

[Page Top](#)

