

[Select a Product](#)[Answer Navigator](#)[Find an Answer](#)[Ask a Question](#)

How to set up Scan to Folder with SMB on a Windows 7 PC

Published 11/01/2010 01:04 AM | Updated 12/22/2017 05:06 PM | Answer ID 127866

[QR Code](#)

Other users found this answer helpful

Yes 69

[Rate this answer](#)

Share Print Email this page

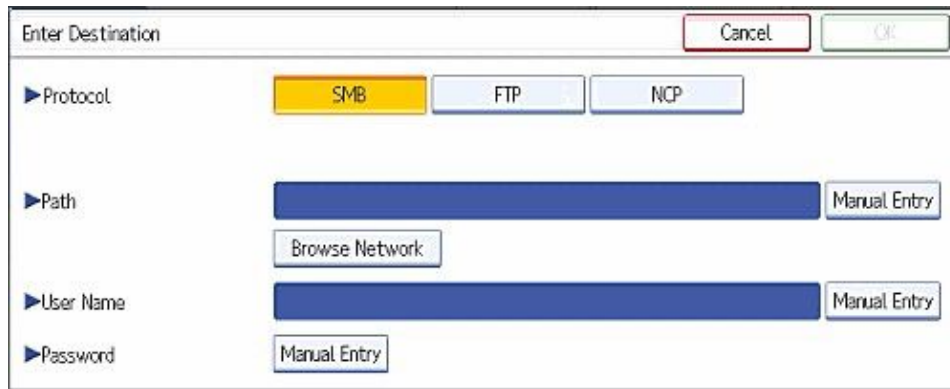
How do I set up Scan to Folder with SMB on a Windows 7 PC? (How do I allow communication with a specific IP address for Windows Firewall with Advanced Security?)

If you cannot send a file from your device using the Scan to Folder function, Windows Firewall may be blocking the communication. Allow communication with a specific IP address in the Windows Firewall settings, and then perform the scan again.

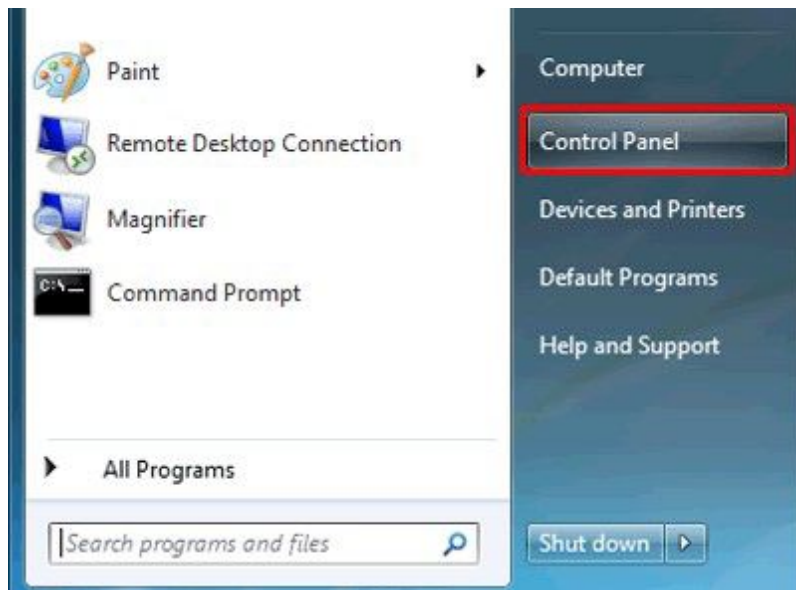
To allow communication with a specific IP address, follow these steps:

Note

- Screenshots are provided for reference purposes only. Your display may vary depending on your operating system and device.
- "Scan to Folder with SMB" refers to performing Scan to Folder while **[SMB]** is selected in **[Protocol]** in the **[Enter Destination]** screen.



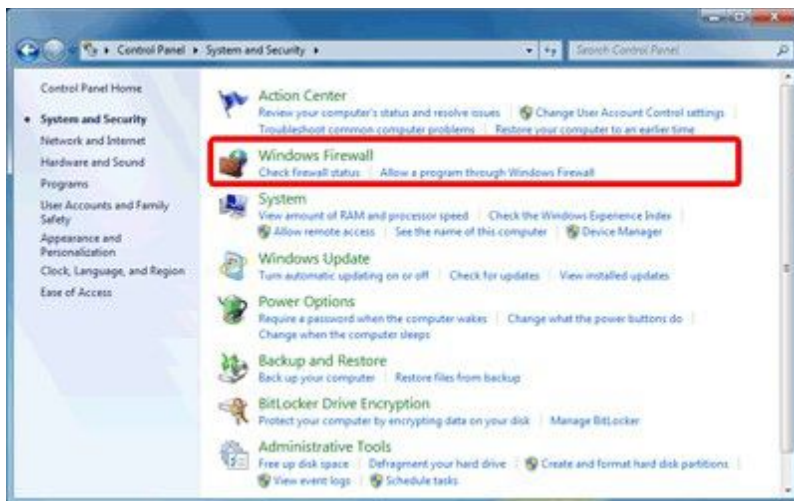
1. On the taskbar, click **[Start]**, and then click **[Control Panel]**.



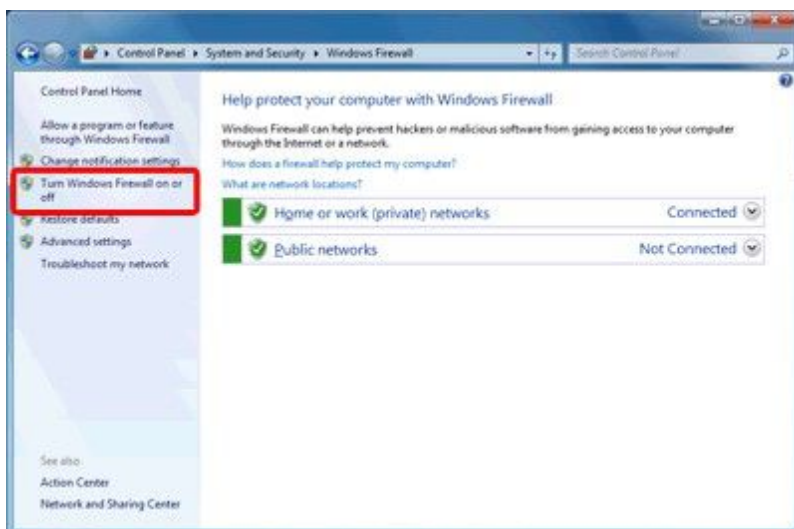
2. Click **[System and Security]**.



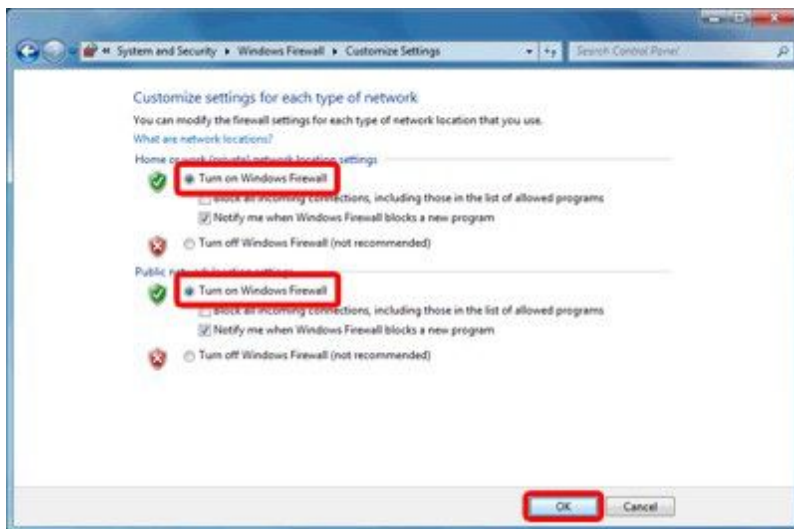
3. Click **[Windows Firewall]**.



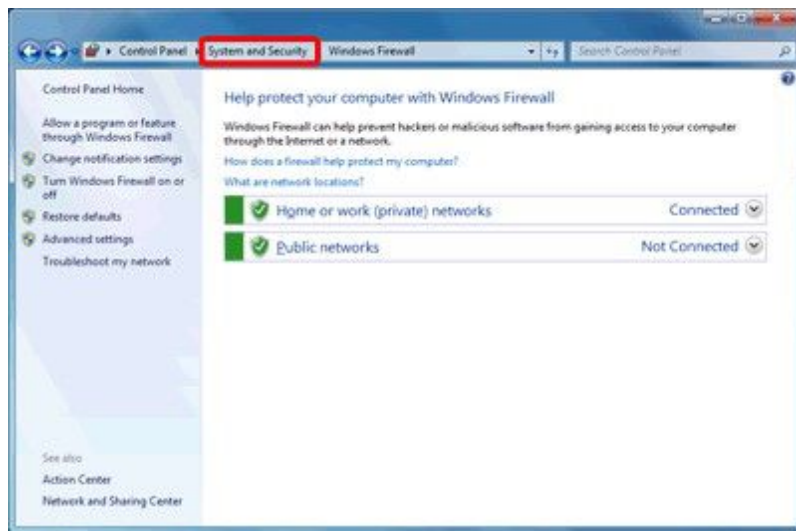
4. Click **[Turn Windows Firewall on or off]**.



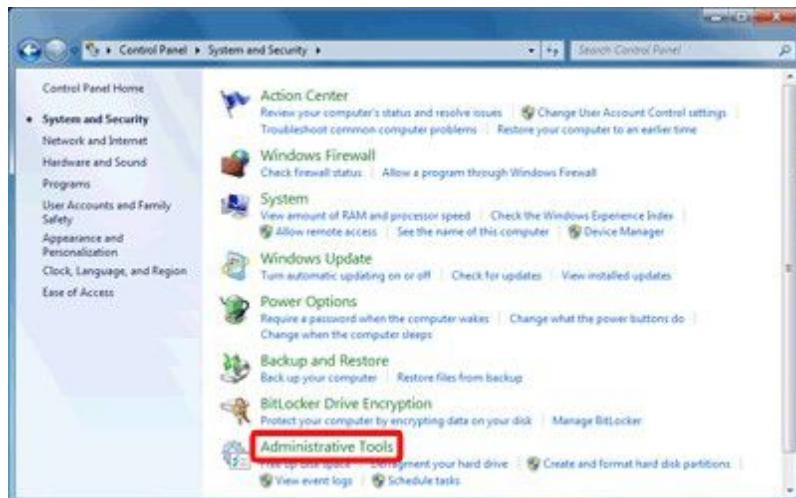
5. Confirm that **[Turn on Windows Firewall]** is selected, and then click **[OK]**.



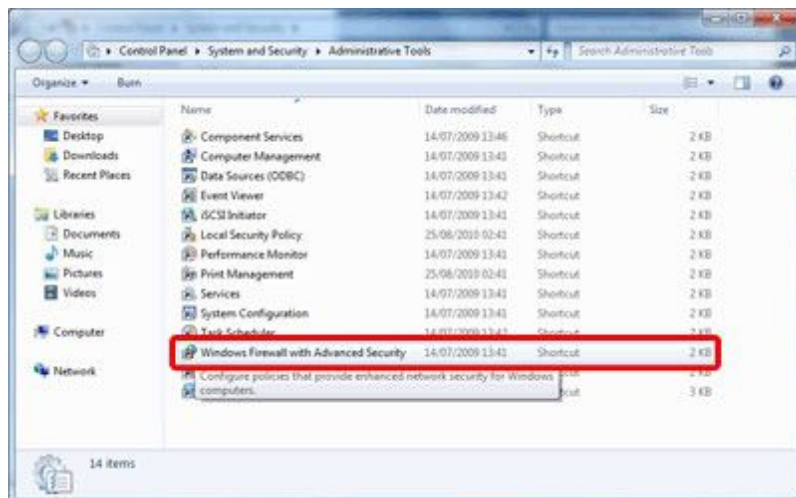
6. Click **[System and Security]**.



7. Click **[Administrative Tools]**.



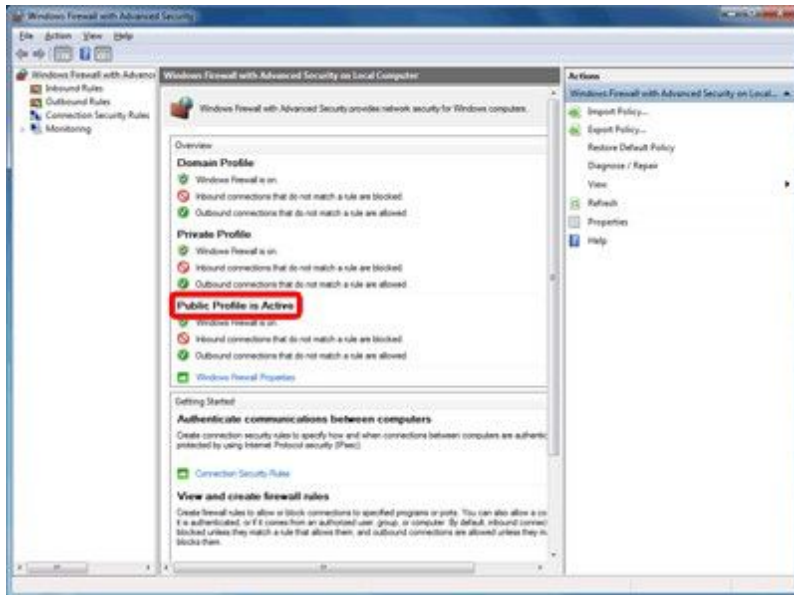
8. Double-click **[Windows Firewall with Advanced Security]**.



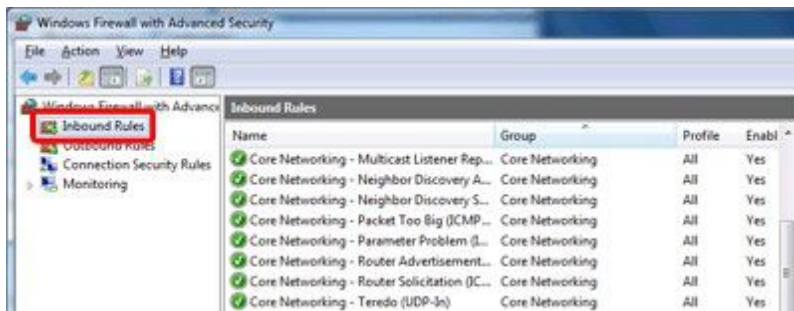
9. Confirm the current profile.

The profile displayed as **[*** Profile is Active]** is the active protocol. (In the below example,

the **[Public Profile]** is currently active.)



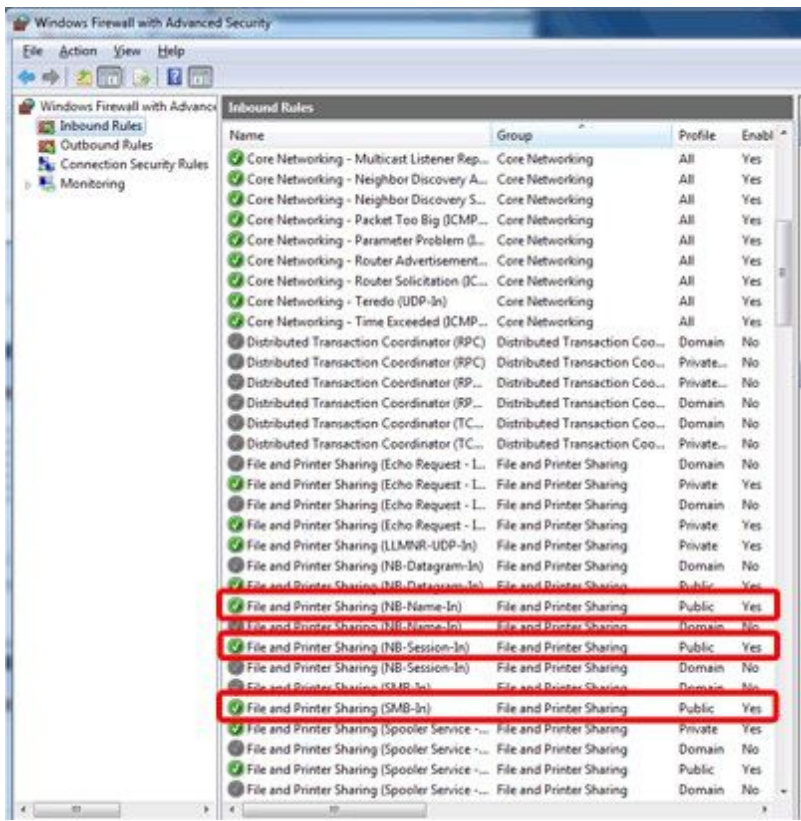
10. Click **[Inbound Rules]**.



11. Scroll down the screen to find the following 3 rules which apply to the profile you confirmed in step 9.

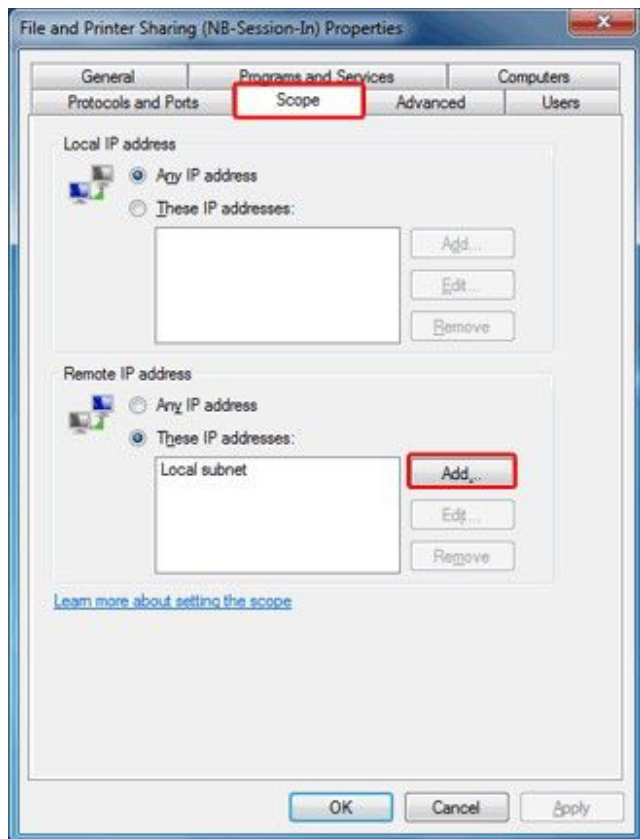
Double-click a rule.

As an example, here we will be opening **[File and Printer Sharing (NB Session-In)]**.



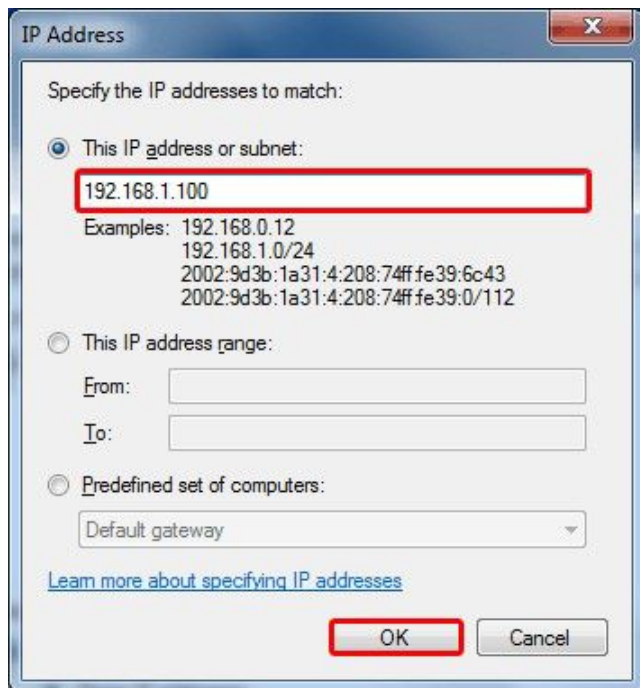
Rule Name	Port
File and Printer Sharing (NB Name-In)	UDP137
File and Printer Sharing (NB Session-In)	TCP139
File and Printer Sharing (SMB-In)	TCP445

12. In the Properties screen, select the **[Scope]** tab, and then click the **[Add]** button in **[Remote IP address]**.

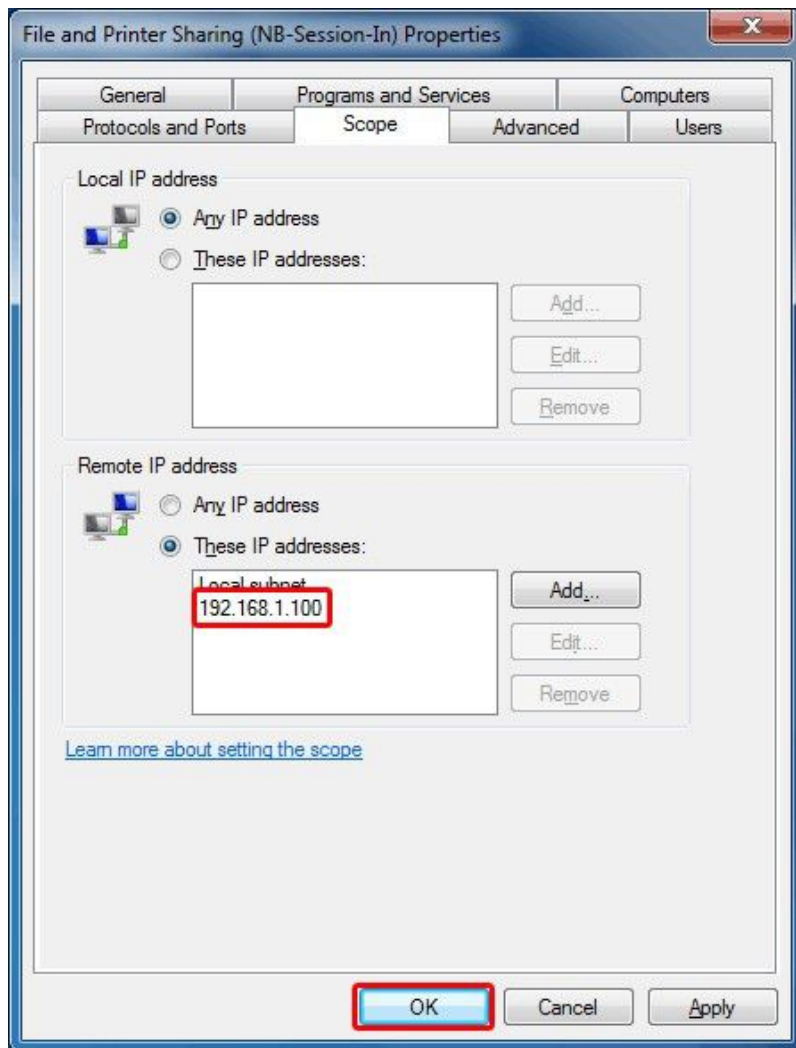


13. Enter the IP address of your device, and then click **[OK]**.

Here, we have entered "192.168.1.100" as an example.



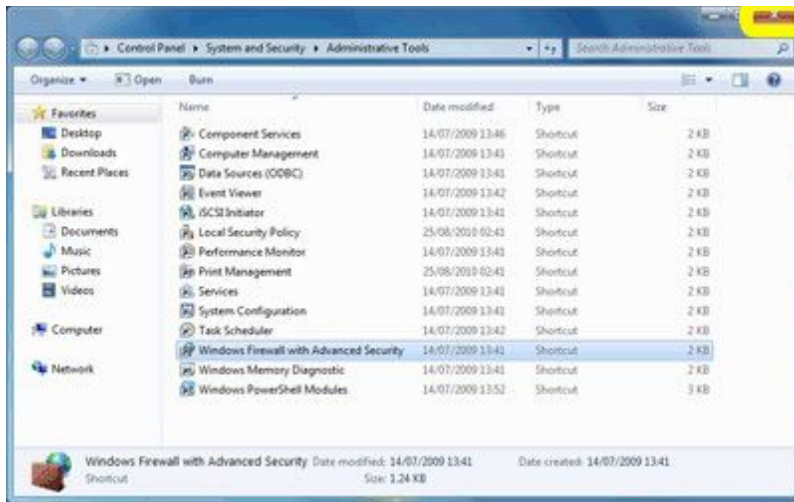
14. Confirm that the IP address you entered is displayed, and then click **[OK]**.



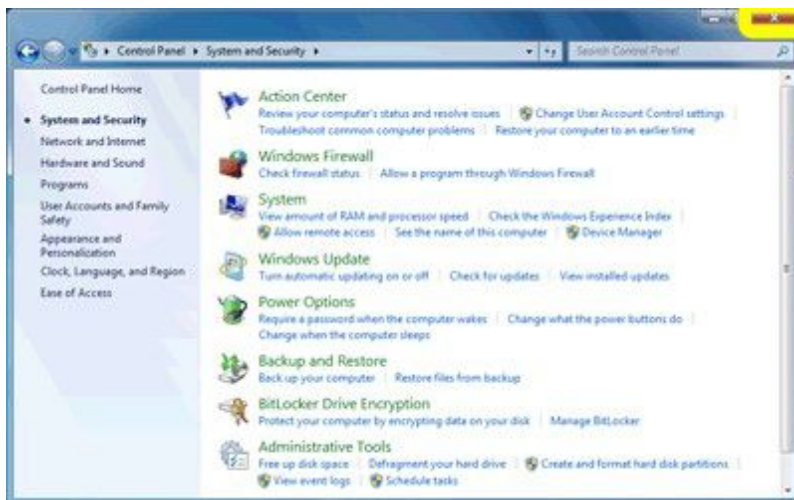
15. Repeat steps 12 to 14 for **[File and Printer Sharing (NB Name-In)]** and **[File and Printer Sharing (SMB-In)]**.
16. Click the **[Close]** button.



17. Click the **[Close]** button in the **[Administrative Tools]** screen.



18. Click the **[Close]** button in the **[System and Security]** screen.



19. The configuration is now complete.

Perform Scan to Folder (SMB) again to confirm you can now scan successfully.

[Page Top](#)