

[Select a Product](#)[Answer Navigator](#)[Find an Answer](#)[Ask a Question](#)

How to create a printer port

[QR Code](#)

Published 03/02/2006 08:19 PM | Updated 12/22/2017 12:59 PM | Answer ID 10268

Other users found this answer helpful Yes 24 [Rate this answer](#)[Share](#) [Print](#) [Email this page](#)

How do I create a printer port?

You can set up a printer port to use "Standard TCP/IP" or "SmartDeviceMonitor for Client"

[Using Standard TCP/IP](#)[Using SmartDeviceMonitor for Client,](#)

Note

- Screenshots are provided for reference purposes only. Your display may vary depending on your operating system and device.
- You will need to know the IP address of your device when configuring port settings.

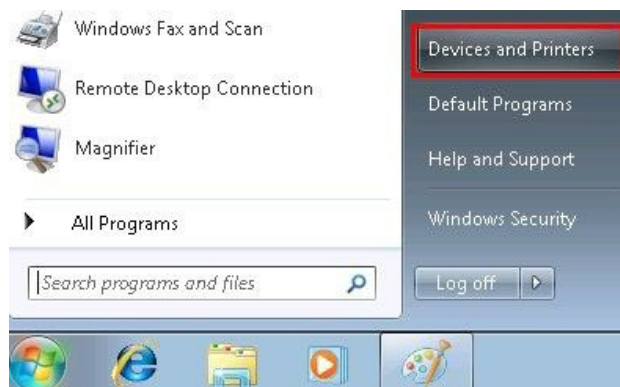
To set up a printer port to use Standard TCP/IP, follow these steps:

1. Open the printer port setup window.

To open the printer port setup window on your operation system, follow the procedure below.

Windows 8/8.1/10**Windows 7****Windows Vista****Windows XP**

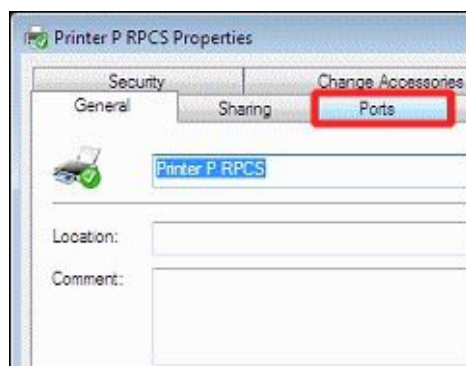
1. On the taskbar, click **[Start]**, and then click **[Devices and Printers]**.



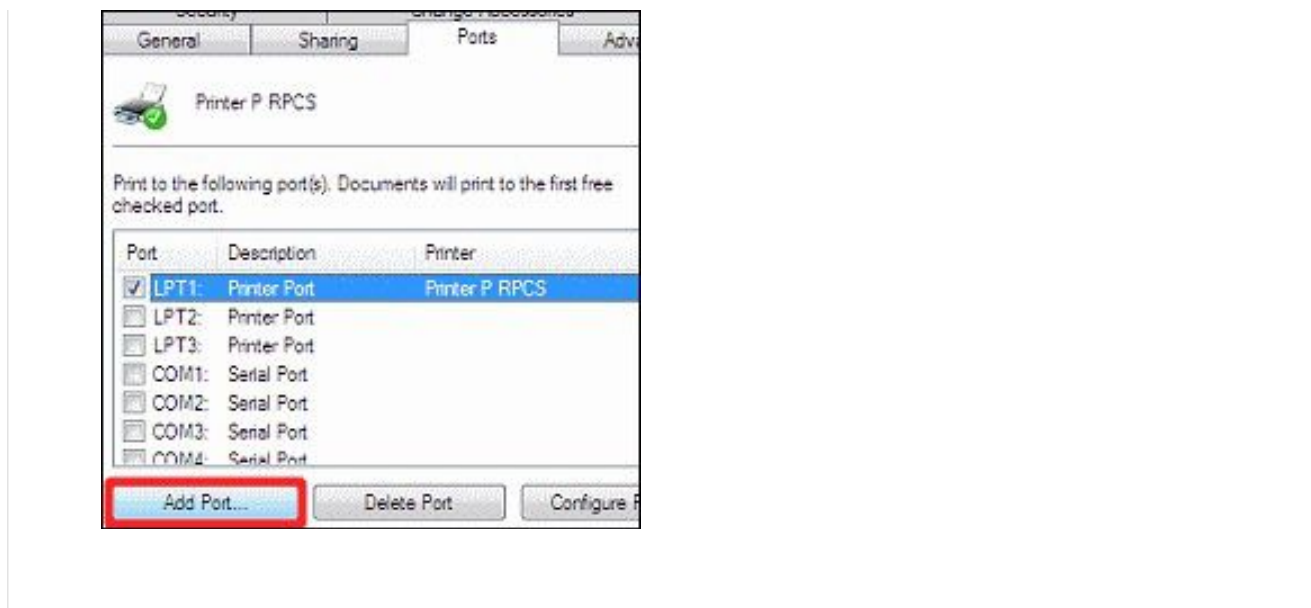
2. Right-click the printer you wish to use, and then click **[Printer properties]**.



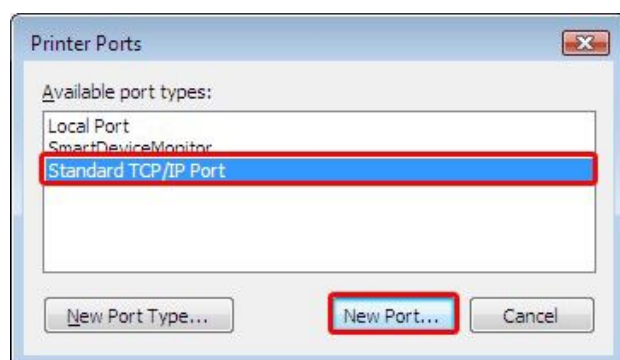
3. Click the **[Ports]** tab.



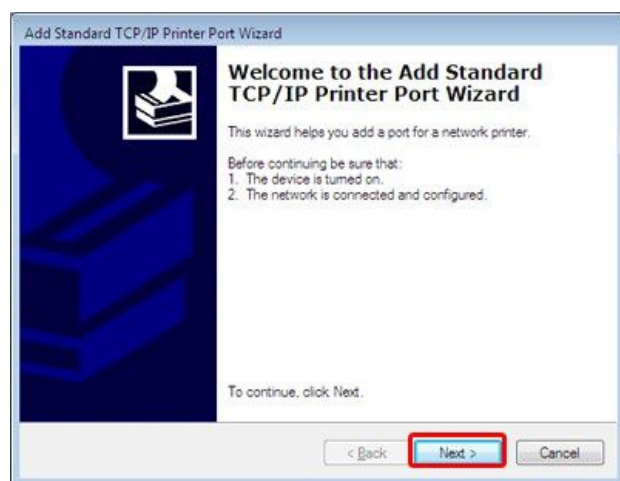
4. Click **[Add Port]**.



2. In the **[Available port types]** box, click **[Standard TCP/IP Port]**, and then click **[New Port]**.
(Note: The procedure from step 2 is explained using Windows 7 as an example.)

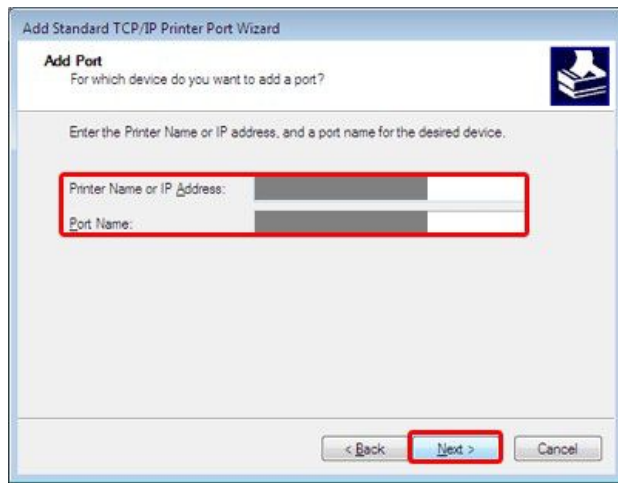


3. Click **[Next]**.



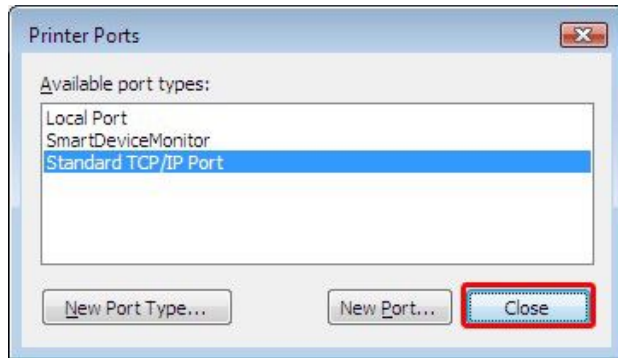
4. In the **[Printer Name or IP Address]** box, enter the name or IP address of the device you wish to use, and then click **[Next]**.

Note: If a message stating that "The device could not be identified" appears, enter the device type information manually.

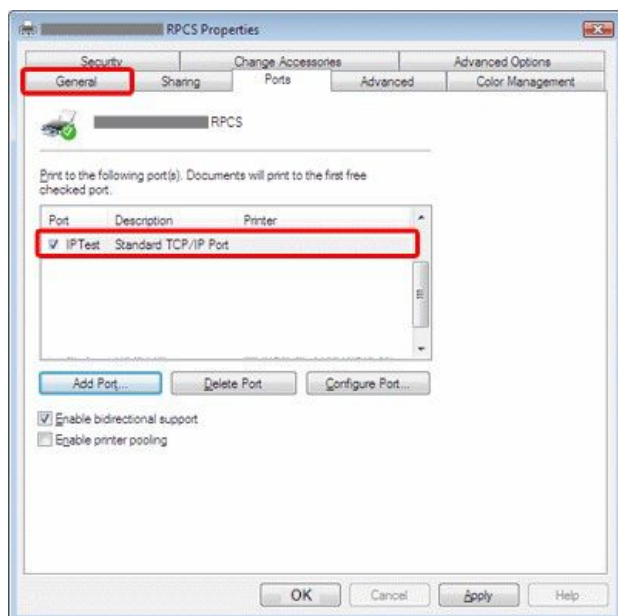


5. Click **[Finish]**.

6. Click **[Close]**.

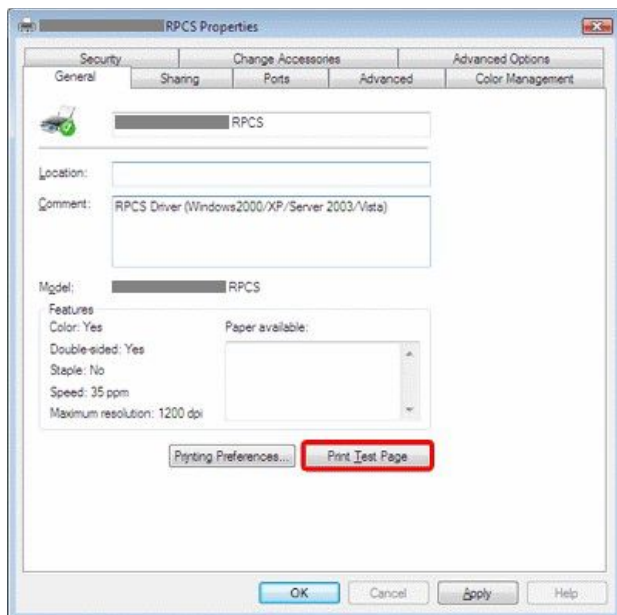


7. Confirm that the check box next to the IP address is set to ON, and then click the **[General]** tab.



8. Click **[Print Test Page]**.

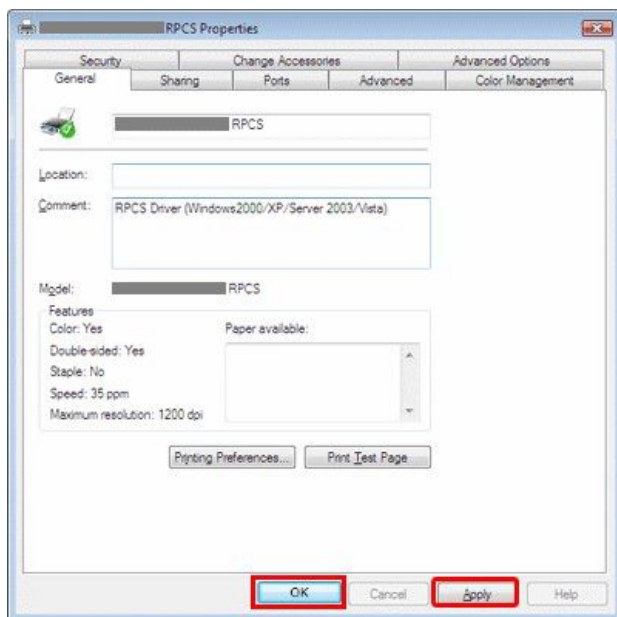
Note: This will increase the counter by one page. You can also skip this step and confirm by simply printing a document.



9. Confirm that the test page was printed correctly.

10. Select **[Apply]**, and then select **[OK]**.

The port configuration is now complete.



[Page Top](#)

To set up a printer port to use SmartDeviceMonitor for Client, follow these steps:

Note

- SmartDeviceMonitor for Client is available from the download site.

1. Open the printer port setup window.

To open the printer port setup window on your operation system, follow the procedure below.

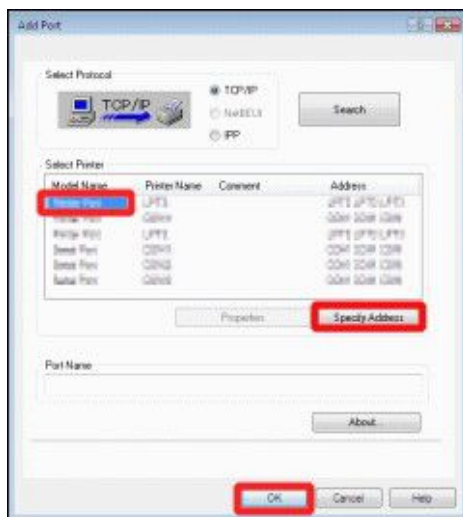
- In the **[Available port types]** list, click **[SmartDeviceMonitor]**, and then click **[New Port]**.
Select **[TCP/IP]** or **[IPP]** protocol.



Using TCP/IP

Using IPP

- In the **[Select Printer]** list, click the printer you want to use, and then click **[OK]**.



If the printer cannot be found, click **[Specify Address]**, and enter the IP address or host name of your printer directly.

- Click **[Cancel]**.
- Confirm that the desired IP address is selected, and then click the **[General]** tab.
- Click **[Print test page]**.

Note: This will increase the counter by one full-color page. You can also skip this step and confirm by simply printing a document.

- Confirm that the page was printed correctly.

[Page Top](#)

